

NATURAL LOCK<sup>®</sup>  
*simplify implantology*

## Patient first

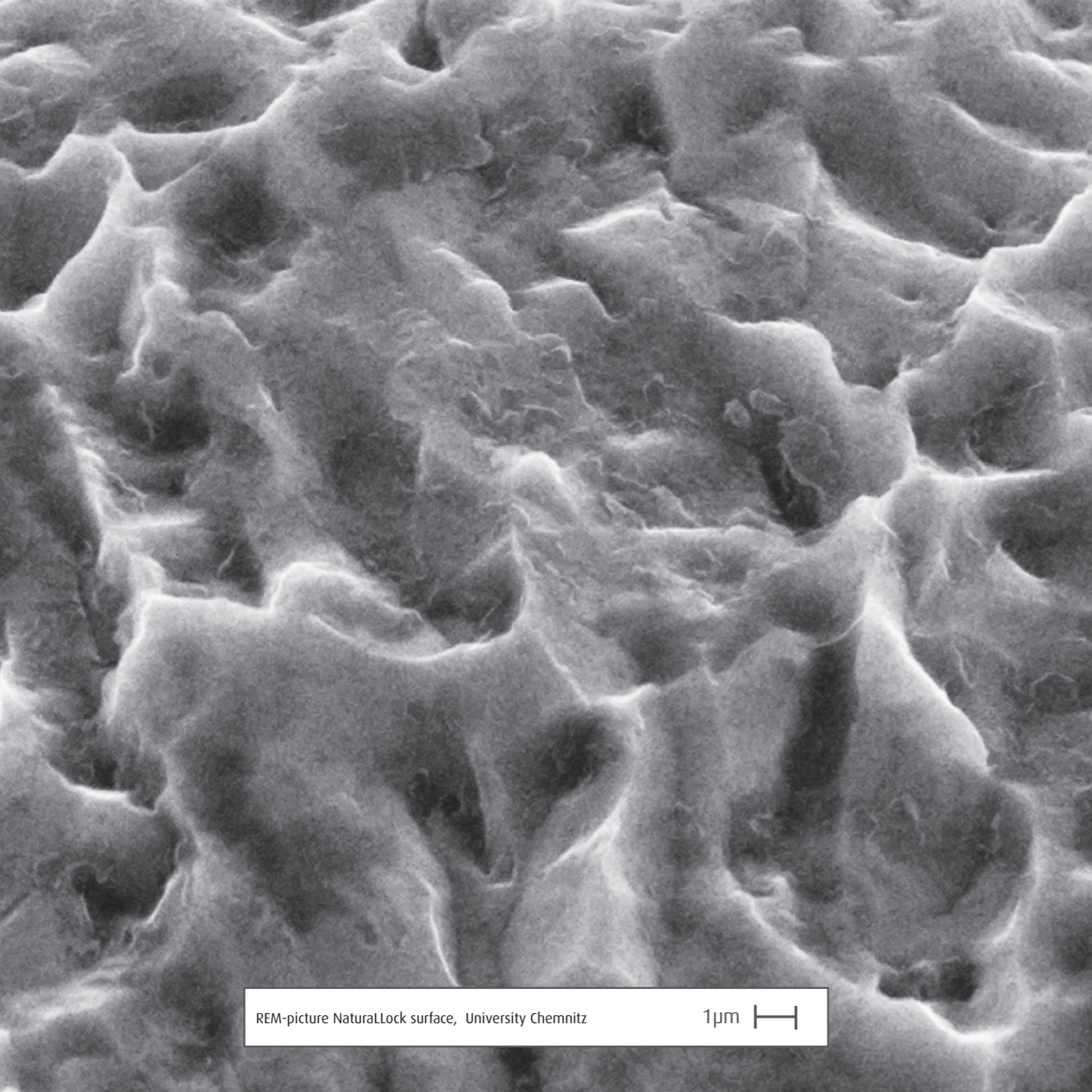
The NaturalLock Implant was specifically developed to simplify the use of implants. More than 10 years of clinical and histological research has been done on the unique abutment design and the biologic surface structure.

A team of oral surgeons, periodontists, general dentists, laboratory technicians and engineers have combined their knowledge and experience to develop this innovative implant. The Global Academy for Biologic Dentistry is proud to endorse the next generation of Biologic Implants.

The future of implantology rests on a biologic, predictable and minimal invasive treatment option for tooth replacements.

The product is manufactured by ZL Microdent. ZL has been manufacturing implants since 1992 and is the quintessence of German quality.



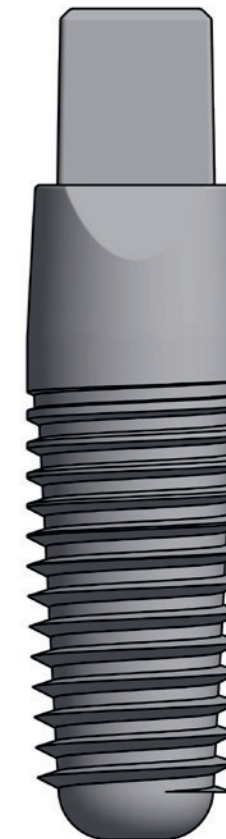


REM-picture NaturalLock surface, University Chemnitz

1µm 

## Features

- One piece with integrated abutment
- Biologic abutment design and surface
- Excellent for anterior and posterior
- Unique “no prep”, “no touch” abutment design
- Thread pattern enables primary stability
- Shallow threads in the coronal part for a gentle cortical compression
- Smooth round tip perfect for internal sinus lift
- Abutment ideal for cad cam techniques
- Double etched surface allows a biologic soft tissue attachment & papillae control
- Immediate function option



## Implant Sizes

	8 mm	10 mm	13 mm	16 mm
ø 3.5 mm		✓	✓	✓
ø 4.3 mm	✓	✓	✓	✓
ø 5.0 mm	✓	✓	✓	✓
ø 6.0 mm	✓	✓	✓	✓

# Simplify implantology

## BENEFITS TO PATIENTS:

- Quick, one appointment procedure
- Minimal invasive insertion
- Immediate return to daily activities
- Minimal to no pain medication
- Fewer treatment visits

## BENEFITS TO COLLEAGUES:

- One implant system for all Implant procedures
- One stage surgery
- Cost effective
- Treatment time reduced with increased profits
- Increased referrals by "happy patients"
- Easy prosthetics with integrated abutment
- Normal impressions or intra oral digital impressions for crown fabrication

## BENEFITS FOR LAB:

- Abutment optimized for milling technique
- Geometry avoids rotation of coping
- Working on lab analogs guarantees exact reproduction of volume
- Crown margins are clearly defined
- No parallel sides on the abutment allows construction of knife edge margins
- Abutment design allows beautiful esthetics

The economic aspect is also very important. Our direct marketing allows us to offer you a very competitive price. Enjoy your increased productivity and profitability.



For further information  
see our webpage  
[www.gabd.org](http://www.gabd.org)

or call:  
+49 (0)4172 - 9000 863

## GABD GmbH

Bernadottestrasse 234  
D-22605 Hamburg

Tel.: +49(0)4172 - 9000 863

Fax: +49(0)4172 - 9000 862

E-Mail: [info@gabd.org](mailto:info@gabd.org)

Web: [www.gabd.org](http://www.gabd.org)